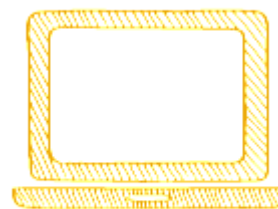


Ascentis Entry Level 3 Certificate and Level 1 Award and Certificate in Character Education Overview Specification



Ofqual Numbers:

**Entry 3 Certificate 603/2018/7
Level 1 Award 603/2020/5
Level 1 Certificate 603/2022/9**

Ofqual Start Date: 01/07/2017
Ofqual Review Date: 31/07/2027
Ofqual Certification Review Date: 31/07/2028

Qualification Overview

These qualifications are designed for learners who would benefit from reflection and adaptation of their own behaviour and character in order to establish themselves within modern society.

There are several features of this qualification that make it very appropriate for its target learners:

- Unit certification is available for each of the units
- Verification and certification can be offered throughout the year, allowing maximum flexibility for centres
- Can be delivered either as a classroom-based course or as a blended learning programme
- Evidence can be generated within a wide range of organisational contexts allowing the qualification to meet the specific occupational requirements of the learners

Aims

The aims of the qualification are to enable learners to develop the skills necessary to work effectively with others, whether in the world of work or in further study.

Target Group

These qualifications are designed for learners who need development of the skills necessary to work effectively with others, whether in the world of work or in further study.

At Certificate size, the qualifications can be adapted to the learners' own needs by choosing specific units on topics that are relevant to them personally. Completion of the Certificate reflects the learning journey of self-evaluation and personal improvement.

Regulation Codes

Ofqual Qualification Numbers:

- Ascentis Entry Level Certificate in Character Education (Entry 3): 603/2018/7
- Ascentis Level 1 Award in Character Education: 603/2020/5
- Ascentis Level 1 Certificate in Character Education: 603/2022/9

Assessment Method

All units are internally assessed through the learner building up a portfolio of evidence that covers the relevant assessment criteria. They are then verified by the centre and externally verified by Ascentis.

Rules of Combination

Ascentis Entry Level Certificate in Character Education (Entry 3)

Learners must achieve a minimum of 15 credits.

2 credits must be achieved from the Mandatory Unit and a minimum of 13 credits from the Optional Units.

Mandatory Unit

Title	Level	Credit Value	GLH	Unit reference
Introduction to Character Development	Entry 3	2	20	A/615/8947

Optional Units

Title	Level	Credit Value	GLH	Unit reference
Introduction to Ethics and Morals	Entry 3	2	20	R/615/8999
Managing and Adapting Behaviour for the Workplace	Entry 3	2	20	D/615/8987
Managing Personal Finance	Entry 3	2	20	H/615/9266
Online Etiquette and Safety	Entry 3	2	20	D/615/9265
Responsible Conduct at Work	Entry 3	1	10	L/615/8984
The Benefit of Confidence and Self-Esteem	Entry 3	2	20	K/615/8992
The Importance of Resilience and Grit	Entry 3	2	20	T/615/8977
Understand and Apply Enterprise Skills	Entry 3	2	20	R/615/8985
Understand and Improve Motivation	Entry 3	2	20	M/615/8993
Understand and Use Negotiation Skills	Entry 3	2	20	J/615/8983
Understand Etiquette and Manners	Entry 3	2	20	T/615/9000
Understand the Importance of Trust	Entry 3	1	10	H/615/8991
Understanding Behaviour and Character Traits	Entry 3	2	20	A/615/8950
Understanding Emotions and Anger Management	Entry 3	1	10	F/615/8996
Understanding the Decision Making Process	Entry 3	1	10	L/615/8998
Understanding the Importance of Being Civil	Entry 3	2	20	H/615/8988
Understanding the Importance of Personal Presentation	Entry 3	2	20	A/615/8978
Using Assertiveness Techniques	Entry 3	1	10	T/615/8994
Using Effective Communication Skills	Entry 3	2	20	T/615/8980
Using Emotional Intelligence	Entry 3	1	10	K/615/8989
Working as Part of a Team	Entry 3	1	10	A/615/8981

Ascentis Level 1 Award in Character Education

Learners must achieve a minimum of 6 credits.

2 credits must be achieved from the Mandatory Unit and a minimum of 4 credits from the Optional Units.

Mandatory Unit

Title	Level	Credit Value	GLH	Unit reference
Introduction to Character Development	Level 1	2	20	K/615/9267

Optional Units

Title	Level	Credit Value	GLH	Unit reference
Introduction to Ethics and Morals	Level 1	2	20	T/615/9286
Managing and Adapting Behaviour for the Workplace	Level 1	2	20	L/615/9276
Managing Personal Finance	Level 1	2	20	F/615/9288
Online Etiquette and Safety	Level 1	2	20	Y/615/9281
Responsible Conduct at Work	Level 1	1	10	F/615/9274
The Benefit of Confidence and Self-Esteem	Level 1	2	20	R/615/9280
The Importance of Resilience and Grit	Level 1	2	20	M/615/9268
Understand and Apply Enterprise Skills	Level 1	2	20	J/615/9275
Understand and Improve Motivation	Level 1	2	20	D/615/9279
Understand and Use Negotiation Skills	Level 1	2	20	A/615/9273
Understand Etiquette and Manners	Level 1	2	20	A/615/9287
Understand the Importance of Trust	Level 1	1	10	D/615/9282
Understanding Behaviour and Character Traits	Level 1	2	20	K/615/9270
Understanding Emotions and Anger Management	Level 1	1	10	R/615/9277
Understanding the Decision Making Process	Level 1	2	20	M/615/9285
Understanding the Importance of Being Civil	Level 1	2	20	K/615/9284
Understanding the Importance of Personal Presentation	Level 1	2	20	T/615/9269
Using Assertiveness Techniques	Level 1	1	10	Y/615/9278
Using Effective Communication Skills	Level 1	2	20	M/615/9271
Using Emotional Intelligence	Level 1	1	10	H/615/9283
Volunteering	Level 1	1	20	H/616/8193
Working as Part of a Team	Level 1	1	10	T/615/9272

Ascentis Level 1 Certificate in Character Education

Learners must achieve a minimum of 15 credits.

2 credits must be achieved from the Mandatory Unit and a minimum of 13 credits from the Optional Units.

Mandatory Unit

Title	Level	Credit Value	GLH	Unit reference
Introduction to Character Development	Level 1	2	20	K/615/9267

Optional Units

Title	Level	Credit Value	GLH	Unit reference
Introduction to Ethics and Morals	Level 1	2	20	T/615/9286
Managing and Adapting Behaviour for the Workplace	Level 1	2	20	L/615/9276
Managing Personal Finance	Level 1	2	20	F/615/9288
Online Etiquette and Safety	Level 1	2	20	Y/615/9281
Responsible Conduct at Work	Level 1	1	10	F/615/9274
The Benefit of Confidence and Self-Esteem	Level 1	2	20	R/615/9280
The Importance of Resilience and Grit	Level 1	2	20	M/615/9268
Understand and Apply Enterprise Skills	Level 1	2	20	J/615/9275
Understand and Improve Motivation	Level 1	2	20	D/615/9279
Understand and Use Negotiation Skills	Level 1	2	20	A/615/9273
Understand Etiquette and Manners	Level 1	2	20	A/615/9287
Understand the Importance of Trust	Level 1	1	10	D/615/9282
Understanding Behaviour and Character Traits	Level 1	2	20	K/615/9270
Understanding Emotions and Anger Management	Level 1	1	10	R/615/9277
Understanding the Decision Making Process	Level 1	2	20	M/615/9285
Understanding the Importance of Being Civil	Level 1	2	20	K/615/9284
Understanding the Importance of Personal Presentation	Level 1	2	20	T/615/9269
Using Assertiveness Techniques	Level 1	1	10	Y/615/9278
Using Effective Communication Skills	Level 1	2	20	M/615/9271
Using Emotional Intelligence	Level 1	1	10	H/615/9283
Volunteering	Level 1	1	20	H/616/8193
Working as Part of a Team	Level 1	1	10	T/615/9272

Guided Learning Hours (GLH)

The recommended guided learning hours for Level 1 Award in Character Education is 60.

The recommended guided learning hours for Entry 3 and Level 1 Certificate in Character Education is 150.

Total Qualification Time (TQT)

The total qualification time for Level 1 Award in Character Education is 60.

The total qualification time for Entry 3 and Level 1 Certificate in Character Education is 150.

Age Range of Qualification

These qualifications are suitable for learners aged 14+, 16–18 and 19+.

Contact & Further Information

New Centres please email hello@ascentis.co.uk or call **01524 845046**.

Existing Centres please visit the login area of our website www.ascentis.co.uk to view the full specification.

Product Development for enquiries please email development@ascentis.co.uk.